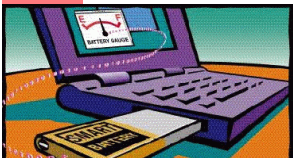


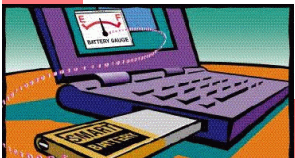
Providing SBS-IF Power Management Software Solutions!

SoftTools
T E C H N O L O G Y



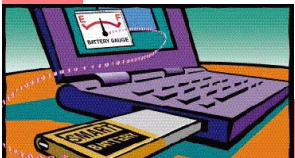
SoftTools SBS³™

- Common smart battery architecture for Windows 98 Windows 2000 and Millennium
- Supports all SBS components, including Smart Battery, Smart Charger, Smart Selector, and Smart Battery System Manager
- Embedded SBSMulation™ technology provides capability to emulate some SBSM device functionality and/or OEM proprietary hardware
- Integrated SmartComp™ interface provides configurable composite smart battery information
- The SoftCache™ data subsystem utilizes battery-caching techniques to lower SMBus communication traffic

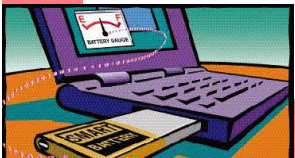
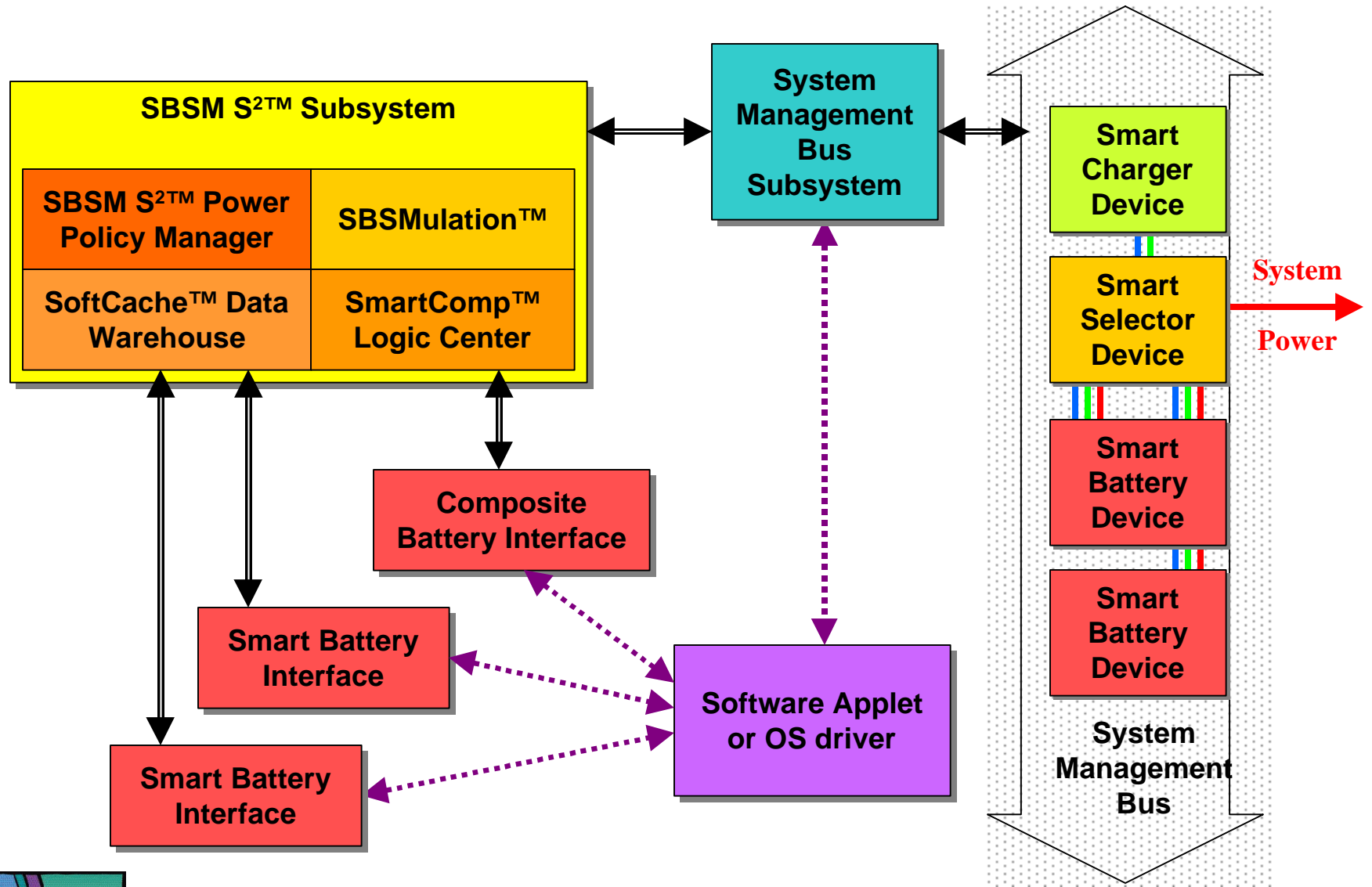


SoftTools SBS³™ (cont.)

- OEM product differentiation can be achieved through customizable configuration of the SmartComp™ interface
- Smart Battery interface uses existing IOCTL interface to OS with Support of the complete Smart Battery Data Specification
- Utilizes a generic communication interface for SMBus-connected SBS devices
 - Works with SBS-IF Control Method Interface or other compatible SMBus driver interface
 - Supports single or multiple physical SMBus segments
- Support also available for Windows CE and Linux!



SBS³™ Architecture



SoftTools Products

- **STI SMBus Driver**

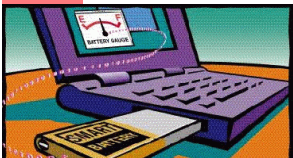
- 100% compatible with SBS-IF SMBus Control Method Interface Specification
- Supports single or multiple physical SMBus segments
- v2.0 manages and supports ARP for dynamic addressing. It also supports Universal Device ID (UDID) device information blocks.

- **Universal SMBus driver**

- Lets you communicate w/ multiple devices on the system management and I²C bus.
- Customizable for vendor-specific hardware implementations

- **SMBus Driver Test Utility**

- GUI applet that allows testing of any SMBus device communication with the host system.



SoftTools Information

Wanted:

SMBus 2.0 Hardware Beta Customers

- **Contact:**
 - Info@softtools.net
 - 408.973.7828 Phone

